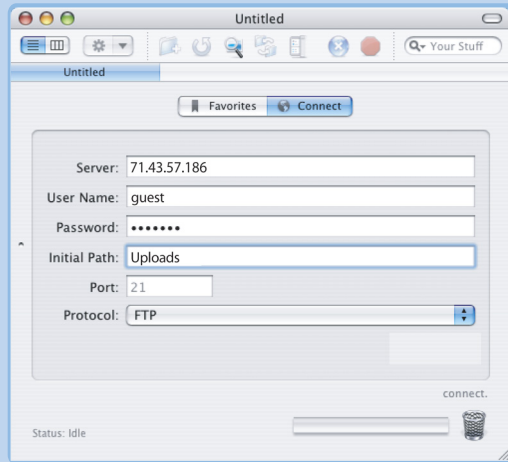


O'Donnell Corporation MAC FTP Instructions



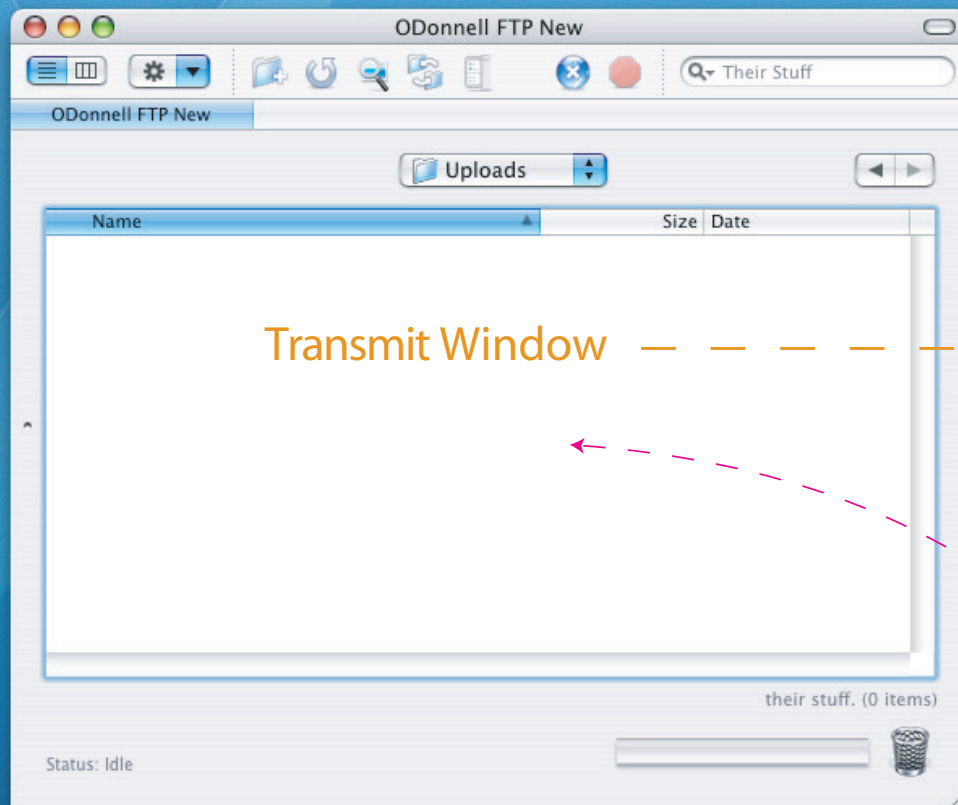
Software available at: www.panic.com/transmit

Fetch Instructions

To send and retrieve files:

1. Start the application Transmit or Fetch
2. Select a New Connection (if necessary)
3. From the Transmit or Fetch window:
 - In the Server or Host field, type: 71.43.57.186
 - Type your User ID: guest
 - Password: digital
 - Initial Path: Uploads

Click Connect



Transmit Window

Local Hard Drive

4. To upload your files and images to "71.43.57.186", compress your files into an archive (i.e. Stuffit or ZIP) and then drag and drop the archive from your Local Hard Drive into the "Uploads" Folder in the Transmit Window